

Announcement: What did the tower say when it made a mistake in its chess game?  
 Whoops Eiffel for that 😊 And, if Rudolph wins a chess tournament is he a braindeer?  
 😊 One thing is clear though, the next exciting RNF is out 😊 + RNF Edn 100 coming up



2023

# ROOK NO FURTHER # 88

## THE WHAT

So, kids, do you want to test your chess skills in a NEW, FUN and EXCITING WAY?  
 And Parents, do you want to know more about upcoming junior tournaments?  
 Rook no further! Find me on [sydneyacademyofchess.com.au/newsletters](http://sydneyacademyofchess.com.au/newsletters) + on our [Facebook Page](#)

COACH JOKES: Q: How do super heroes fix their broken chess boards?  
 A: With super glue 😊

## TACTICAL TIPS + TRICKS:

### Attacking Ideas In Chess #3

#### Play an Opening 😊

Hi guys. Now, one of the most important things we can do as we get more experience in chess- looking at things from the start of the game this time, is to play what's called an "opening". An opening is a specific pattern that helps us control the centre, develop our knights + bishops and castle right from the get-go. There are many different openings all suited towards different playing styles. In fact there's probably at least 100+ different openings that exist. Openings for White such as the Ruy Lopez or Queens Gambit aim to develop pieces quickly and lay clear claim to the center with pawns having structure. Openings for Black are called defences. Those such as the Sicilian Defence or Nimzo-Indian have counterattack as their clear basis. There are many

more openings out there that fight for the advantage.

## PESKY PUZZLES:

In each position find the best move/moves.

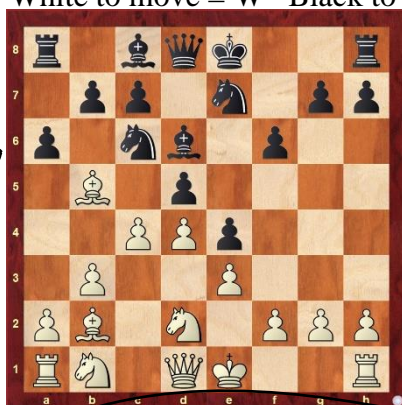
White to move = W Black to move = B

Ask your coach 😊

**Question:** 😊  
 Different question this time. Why is White's Bishop to a6 move so strong? What does it win?



W



How can White win a pawn?



B

Draw with repetitive check

## MAGIC MINIS

Each newsletter, a fun mini game.

1. e4 e6
2. d4 Nf6
3. Bg5 Be7
4. Bd3 O-O
5. Nc3 Nxe4?
6. Bxe7 Nxc3
7. Bxh7+! Kh8
8. Qh5!! 1-0

Final Position 😊 😊 😊



**Bonus Chess Joke:** Who won the Princess chess tournament? Rapunzel... By a hair XD XD 😊 😊 😊 😊 😊

## UPCOMING EVENTS

<https://sydneyacademyofchess.com.au/tournaments/upcoming>

- |   |                        |
|---|------------------------|
| <b>CHESS SQUAD U/18 TOURNAMENT 3RD JUNE</b>   | <b>9:30am- 12:30pm</b> |
| <a href="https://www.chesssquad.com/subscribe/?plan=prod_Mt3M6e6k6ZYuEn">https://www.chesssquad.com/subscribe/?plan=prod_Mt3M6e6k6ZYuEn</a> |                        |
| <b>INNER WEST SUNDAY FUN TOURNAMENT 4TH JUNE</b>  | <b>9:20am- 1:00pm</b>  |
| Online Code: W2VMRL4JR5   |                        |
| <b>PARRAMATTA SATURDAY FUN TOURNAMENT 10TH JUNE</b>   | <b>12:50pm- 4:00pm</b> |
| Online Code: 63KS834FCC   |                        |
| <b>HURSTVILLE SUNDAY FUN TOURNAMENT 11TH JUNE</b>   | <b>9:40am- 1:00pm</b>  |
| Online Code: 6XS3QAO1TI   |                        |
| <b>PYMBLE SATURDAY FUN TOURNAMENT 17TH JUNE</b>   | <b>12:50pm- 3:50pm</b> |
| Online Code: 64378UY5MF   |                        |

To enrol in any of the above please pay online with your credit card or debit card at [www.sydneyacademyofchess.com.au/payment](http://www.sydneyacademyofchess.com.au/payment) enter the relevant code, and fill in the electronic form, with your child's details.



SuperCoach signing off