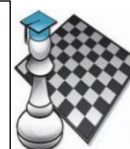


Announcement: It's term 4, so bonus chess joke time. Why couldn't the hammer carrying super hero play chess when he was a kid? Because he was a little thor 😊
 More chess jokes, informative tips and tricks + pesky puzzles abound below 😊 😊 😊



SYDNEY ACADEMY OF CHESS

ROOK NO FURTHER # 37

THE WHAT

So, kids, do you want to test your chess skills in a NEW, FUN and EXCITING WAY?

And Parents, do you want to know more about upcoming junior tournaments?

Rook no further! Find me on sydneyacademyofchess.com.au/newsletters + on our [Facebook Page](#)

COACH JOKES: Q: What did the tree say when it won the chess game in spring?
 A: What a re-leaf 😊

TACTICAL TIPS + TRICKS: Learn a Particular Opening "Pattern"

GOLDEN RULES #2

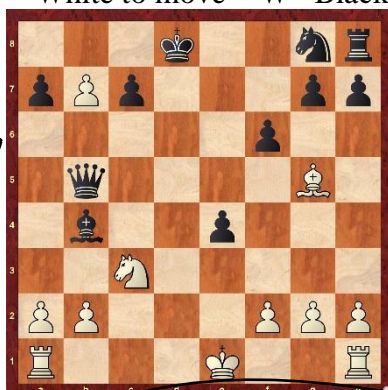
Hi guys. Building off of RNF 36, there are many different ways to start a game that all control the centre, develop knights and bishops and castle for king safety. But it is very important to learn the overall idea of a few of them. This DOES NOT mean memorising moves. No. I'm more talking about the overall plan. Why am I placing my pieces where I'm placing them in other words. To give you an example. The Larsen attack opening for white, starts 1. pawn to b3, followed by 2. Bishop to b2. If I play this opening in a game I know the goal is to increase the space of my b2 bishop as much as possible. Or the Ruy Lopez opening for white, which is e4 e5 Nf3 Nc6 Bb5. Plan = castle quickly and attack the center. You learn these plans with experience 😊 😊

PESKY PUZZLES:

In each position find the best move/moves.

White to move = W Black to move = B

Question:
 "When you think of a move, wait see if there's a better one." We play white here 😊



MAGIC MINIS

Each newsletter, a fun mini game.

1. d4 Nc6
2. e3 d6
3. c4 e5
4. Nc3 f5
5. d5 Nce7
6. Nf3 Ng6
7. Be2 e4!
8. Nd4 Nf6
9. O-O Ne5
10. b3 Be7
11. Bb2 O-O
12. Ncb5 a6
13. Nc3 Qe8
14. Rc1 Qg6
15. f3 Qh6
16. Qd2 exf3
17. Nxf3 Nfg4!
18. Nd1 Nxf3+
19. Bxf3 Qxh2 checkmate 0-1



A Queen and knight attacking combo is like going to a 2D movie then getting upgraded to 3D. 😊 😊 😊

UPCOMING EVENTS

- <https://sydneyacademyofchess.com.au/tournaments/upcoming>
- PARRAMATTA SATURDAY FUN TOURNAMENT 14TH NOVEMBER 12:50pm- 4:00pm**
 Online Code: DUSXFNFAP0
 - NORTHERN BEACHES SUNDAY TOURNAMENT 15TH NOVEMBER 12:40pm- 3:50pm**
 Online Code: 7RHIVA8JLH
 - EPPING SATURDAY FUN TOURNAMENT 21ST NOVEMBER 1:40pm- 4:50pm**
 Online Code: FAIA6UPLCT
 - PYMBLE SATURDAY FUN TOURNAMENT 21ST NOVEMBER 12:40pm- 3:50pm**
 Online Code: XGRBK6II5Y
 - XMAS SWISS CHESS CHALLENGE 29TH NOVEMBER 9:15am- 1:30pm**
 Online Code: OWG5Q8Z1LT

To enrol in any of the above please pay online with your credit card or debit card at www.sydneyacademyofchess.com.au/payment enter the relevant code, and fill in the electronic form, with your child's details.



SuperCoach signing off