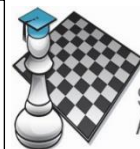


Announcement: A big welcome back to the newsletter that would make Bishops move in a straight line and Knights in a Z shape to read it. Yep, that's right, you guessed it. It's the one & only, (not to mention legendary) Rook No Further. Back for Term 2 😊



SYDNEY ACADEMY OF CHESS

ROOK NO FURTHER # 26

THE WHAT

So, kids, do you want to test your chess skills in a NEW, FUN and EXCITING WAY?

And Parents, do you want to know more about upcoming junior tournaments?

Rook no further! Find me on sydneyacademyofchess.com.au/newsletters + on our [Facebook Page](#)

COACH JOKES: Q: Why does Superman always get invited to chess tournaments?
A: Because there's dinner afterwards and he's a Supper Hero 😊

TACTICAL TIPS + TRICKS: Terrific Chess Traps and Zaps 1: The Cambridge Springs Defence

Hi guys, for this term we're going to build on practical tips that help us win chess games. The first of these are learning/trying different opening traps. An opening trap is an opening sequence that might win you a pawn/some other material, or get you a quick checkmate. Now, it's very important when people try for opening traps, several of these neglect basic opening ideas. The opening traps I suggest however, actually follow normal opening principles. So, if they don't work, you still control the centre anyway + develop. For example, the very first trap I learnt as a junior was the extremely solid Cambridge springs trap for black-the moves of which are: **d4 d5 c4 e6 Nc3 Nf6 Bg5 Nbd7! cxd5 exd5 Nxd5? Nxd5! Bxd8**. Below is the Position in the 1st puzzle.

PESKY PUZZLES:

In each position find the best move/moves.
White to move = W Black to move = B

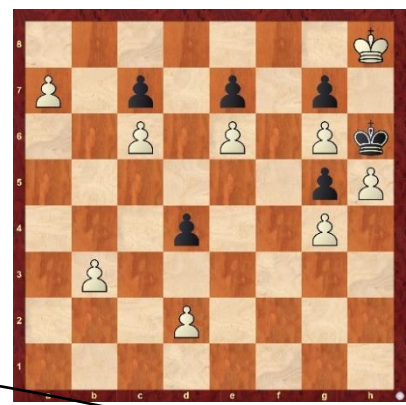
Question:
How can BLACK get his Queen back here and just be up a piece?



W



W



W

Notable notation

HOW TO READ CHESS NOTATION
A chess notation crash course for RNF 26

Each piece has its own letter
K = King Q = Queen R = Rook
B = Bishop N = Knight
Pawn = (no letter just the square it moved to, ie d6 or f3. Or if 2 pawns, cxd4, hxg2 etc)

Special Moves
Captures = X
Check = +
Checkmate = ++ or #
Castle Kingside = 0-0
Castle Queenside = 0-0-0

Squares = Letter first, then number
Examples, f2, h4, c6 etc.
In action: Rxd6, Qxg2# Nc4+ cxd1 etc.,

FUN FUN FUN CHESS JOKES

Even more chess jokes 😊 😊 😊 😊

- 1) Why couldn't the elf play chess? Because he had too much gnomework 😊
- 2) Why can you never make a mistake playing chess at the airport? Because everything is in plane sight 😊
- 3) Why couldn't the tree think of a move in his chess game? He was stumped 😊
- 4) What type of dinosaur can't you play chess with? A stega snore, because they're always asleep 😊
- 5) What do you call a sleeping bull who can't play chess? A bulldozer 😊
- 6) How did the chess player know to sacrifice his knight when playing against the chef? He didn't but for checkmate he was willing to take the whisk 😊
- 7) What did the pancake say when it made a mistake and lost his Queen? How waffle 😊



SuperCoach signing off