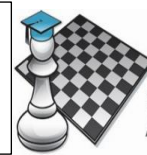


Announcement: Rook here, Rook there, Rook everywhere! Rook high, Rook low, Rook around, Rook above and Rook below!! Rook near, Rook far, Rook close and Rook closer!!! Rook a1 Rook h1!!!! Rook a8 Rook h8!!!! **ROOK NO FURTHER** 😊😊😊😊😊



SYDNEY ACADEMY OF CHESS

ROOK NO FURTHER # 22

THE WHAT

So, kids, do you want to test your chess skills in a NEW, FUN and EXCITING WAY?

And Parents, do you want to know more about upcoming junior tournaments?

Rook no further! Find me on sydneyacademyofchess.com.au/newsletters + on our [Facebook Page](#)

COACH JOKES: Q: Did you hear about the dog who only played chess with a clock?
A: Any interruption he'd paws it! 😊

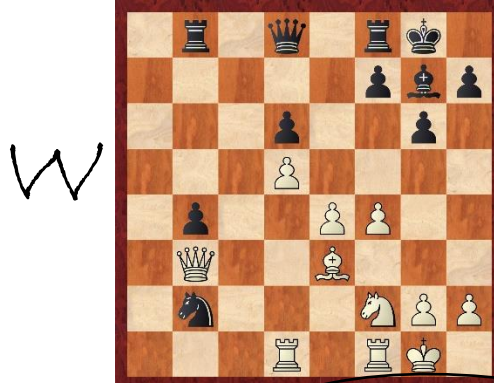
TACTICAL TIPS + TRICKS:

Opening Tips 2: Larsen Attack:
Good vs. Both Central Pawns!

Hi guys, one of the best things about the Larsen Attack is you can always play it. Unlike most other openings, the Larsen **DOES NOT** depend on opponent moves. For example if you play pawn e4 at the start- which I also play, you have to be prepared for black to move pawn to e6 - known as the French defence, pawn to c5 - known as the Sicilian defence, or pawn to d5 - known as the Scandinavian defence to name just a few. However, with the Larsen attack, your opponent cannot stop you from playing 1. pawn to b3 and 2. bishop to b2! If your opponent answers your b3 with pawn d5, the plan is to improve the space of your **mega** bishop on b2. If they move pawn to e5 instead, this pawn becomes a target. Simple plans, but effective in practice. They work 😊

PESKY PUZZLES:

In each position find the best move/moves.
White to move = W Black to move = B



MAGIC MINIS

Each newsletter, a fun mini game.

- b3 e5
- Bb2 Nc6
- e3 Nf6
- Nf3 e4
- Nd4 Bd6
- c4 0-0
- Be2 Re8
- 0-0 Ne5
- Nf5 Bf8
- Nc3 d5
- Ng3 c6
- f4 exf3 (e.p)
- Bxf3 Nxf3+
- Qxf3 d4
- Nce4 Nxe4
- Nxe4 Qe7
- Bxd4! Qxe4??
- Qxf7+ Black resigns
- Kh8, 19. Qxf8 after...



Can you spot the attack coming like a tank on which rank? 😊

UPCOMING EVENTS

<https://sydneyacademyofchess.com.au/tournaments/upcoming>

- | | |
|--|------------------------|
| PYMBLE SATURDAY FUN TOURNAMENT 22ND FEBRUARY | 12:40pm- 3:50pm |
| Online Code: XGRBK6II5Y | |
| EPHING SATURDAY FUN TOURNAMENT 29TH FEBRUARY | 1:40pm-4:50pm |
| Online Code: FAIA6UPLCT | |
| INNER WEST SUNDAY FUN TOURNAMENT 1ST MARCH | 9:20am-1:00pm |
| Online Code: H4AVPO7OYV | |
| PARRAMATTA SATURDAY FUN TOURNAMENT 14TH MARCH | 12:50pm-4:00pm |
| Online Code: DUSXFNFAPO | |
| HORNSBY SUNDAY FUN TOURNAMENT 15TH MARCH | 12:40pm-3:50pm |
| Online Code: 3EZ5IXRGIT | |

To enrol in any of the above please pay online with your credit card or debit card at www.sydneyacademyofchess.com.au/payment enter the relevant code, and fill in the electronic form, with your child's details.



SuperCoach signing off