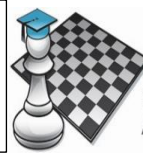


Announcement: Hi, welcome back everyone! That is, a big welcome back to our returning readers, and also to our new readers. Notably, to readers of the world's greatest newsletter since the invention of the alphabet. "Rook No Further". 😊😊



SYDNEY ACADEMY OF CHESS

# ROOK NO FURTHER # 21

## THE WHAT

So, kids, do you want to test your chess skills in a NEW, FUN and EXCITING WAY?

And Parents, do you want to know more about upcoming junior tournaments?

Rook no further! Find me on [sydneyacademyofchess.com.au/newsletters](http://sydneyacademyofchess.com.au/newsletters) + on our [Facebook Page](#)

**COACH JOKES:** Q: Why are vegetables so good at chess?  
A: They give their pieces as mushroom as possible 😊

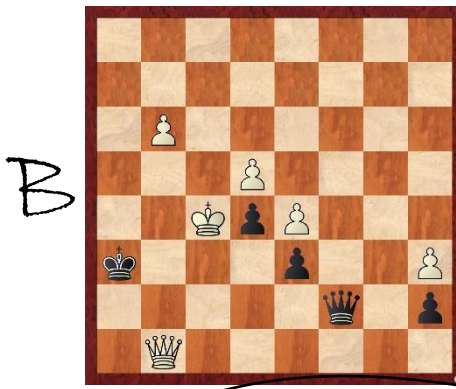
## TACTICAL TIPS + TRICKS: Opening Tips 1: Try the Larsen Attack Opening, 1. b3, 2. Bb2.

Hi everyone, and welcome back to Term 1 2020! :) I find as a chess player that the new year is as good a time as any to look at openings. Certain openings in particular. Remember the things we should be doing in the opening/start of the game? That is, we should try to control the center with pawns, we should try to develop our knights + bishops, and finally, we should also castle for king safety. There's lots of different patterns, (basically), that all do that. But let's learn one in particular this term. That of the **Larsen Attack**. 1. b3-2.Bb2 for white.. Starting off, a good key thing to notice is if black castles on the kingside our bishop is already aiming towards his king (**see below**). In the next exciting editions of RNF we'll look at some common responses to this.

## PESKY PUZZLES:

In each position find the best move/moves.  
White to move = W Black to move = B

Note: the B2 Bishop.  
RNF22 will look at developing other pieces around this.



## MAGIC MINIS

Each newsletter, a fun mini game.

1. b3 c5    11. d4 Be6? *Moving a piece twice?*
2. Bb2 e6    12. Ne5 Ne4
3. e3 d5    13. Nxe4 dxe4
4. f4 Nc6    14. d5 Nxe5
5. Nf3 Nf6    15. fxe5!! *Game Over 1-0* 😊
6. Be2 Bd6
7. 0-0 Qc7
8. c4 a6
9. Nc3 Bd7
10. cxd5 exd5



## UPCOMING EVENTS

<https://sydneyacademyofchess.com.au/tournaments/upcoming>

**PARRAMATTA SATURDAY FUN TOURNAMENT 15TH FEBRUARY 12:50pm- 4:00pm**

Online Code: DUSXFNFAP0

**HORNSBY SUNDAY FUN TOURNAMENT 16TH FEBRUARY 12:40pm-3:50pm**

Online Code: 3EZ5IXRGIT

**PYMBLE SATURDAY FUN TOURNAMENT 22ND FEBRUARY 12:40pm-3:50pm**

Online Code: XGRBK6II5Y

**EPHING SATURDAY FUN TOURNAMENT 29TH FEBRUARY 1:50pm-4:50pm**

Online Code: FAIA6UPLCT

**INNER WEST SUNDAY FUN TOURNAMENT 1ST MARCH 9:20am-1:00pm**

Online Code: H4AVPO7OYV

To enrol in any of the above please pay online with your credit card or debit card at [www.sydneyacademyofchess.com.au/payment](http://www.sydneyacademyofchess.com.au/payment) enter the relevant code, and fill in the electronic form, with your child's details.



SuperCoach signing off