



SYDNEY  
ACADEMY OF CHESS

ROOK NO FURTHER 130!

[illegible]

## THE WHAT?

Rook no further! Find me on [sydneyacademyofchess.com.au/newsletters](https://sydneyacademyofchess.com.au/newsletters) + on our [Facebook Page](#)

## TACTICAL TIPS + TRICKS:

## Surprising Openings for the Opponent

***See Magic Mini***

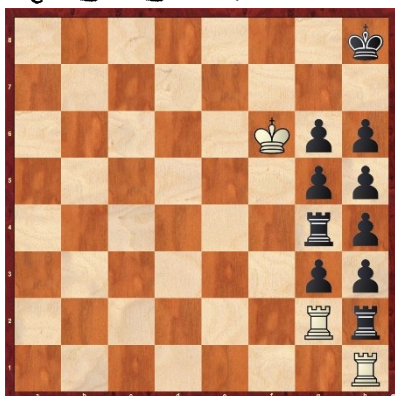
Hi guys. One thing that has helped me recently in my own tournaments has been very much playing a different opening to what I normally play. That is, I recently re-learnt the ins and outs of the Caro Kann system for Black v. 1. pawn to e4. Now it's interesting. The Caro Kann isn't really a system (you can't play it against everything White does), but I've called it that here, because I learnt general plans vs. (it feels like) an enormous number of choices for White. I also learnt some new ideas with the typical 1. pawn c6 that you would play in the Caro, but I managed to broaden out this little pawn move to extend it to some d4 Queens Gambit Slav defence ideas as well. My approach has been play 1. pawn c6 and d5 v e4 and 1. pawn d5 and c6 v the Queens Gambit which has

won me 2/2 recent and impressive games. I might not have

**Find the best move/moves.**

played perfectly, but importantly  
opponent's weren't expecting such!

Here, the only piece that moves is the White King- but all its moves must be legal! You can't walk into check etc,. How many moves to checkmate Black? 😊



The King goes on a taking picnic



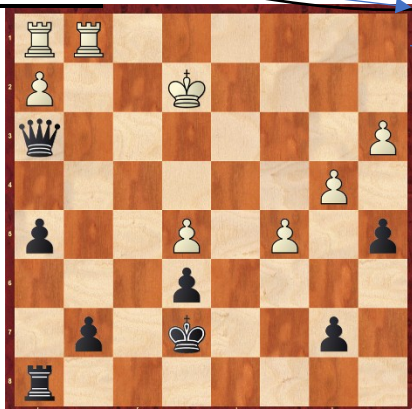
2) How does White draw here? *Hint:*

**Force/create a wall of pawns :) :) :) :) :) :**



Black moves, then White mates

1. e4 c6
2. d4 d5
3. e5 c5
4. Nf3 Bg4!?
5. dxc5 e6
6. Be3 Qc7
7. Bb5+ Nc6
8. Qd4 Bxf3
9. gxf3 Ne7
10. b4 Nf5!



	a	b	c	d	e	f	g	h
19.	Qg4?			h5!				
20.	Qh3			Rf5				
21.	Nf3			d4!!				
22.	Ke2			Qb5+				
23.	Ke1			dxe3				
24.	Nd4			Qc4!				
25.	Nxf5			Qc3+				
26.	Ke2			Qxc2+				
27.	Kxe3			Qc3+				
28.	Ke2			Qxh3!				
29.	Nxe7+			Kd7				
30.	Rag1			Kxe7				

**0-1 very pleasing win for me with Black**

<https://sydneyacademyofchess.com.au/tournaments/upcoming>

**ROSEVILLE SATURDAY FUN TOURNAMENT 5TH JULY**

**1:40pm- 4:50pm**

Online Code: 3CZSBPIYXF

**PARRAMATTA U500 JCL TOURNAMENT 5TH JULY**

**12:45pm- 3:50pm**

Online Code: 1IX545TQU0

## BURWOOD SUNDAY TOURNAMENT 6TH JULY

**9:20am- 1:00pm**

**Online Code:** TX7STZUM8L

## BURWOOD CHESS CHALLENGE 7TH JULY

**8:45am- 3:15pm**

Online Code: BTAOM8DFPK

## PARRAMATTA SATURDAY FUN TOURNAMENT 12TH JULY

**12:50pm- 3:50pm**

Online Code: WNI41D9KRC

To enrol in any of the above please pay online with your credit card or debit card at [www.sydneycademyofchess.com.au/payment](http://www.sydneycademyofchess.com.au/payment) enter the relevant code, and fill in the electronic form, with your child's details.



### BONUS CHESS JOKE

People always cheat at chess vs. Big Foot, yeti never complains 😊😊

SuperCoach signing off