



SYDNEY
ACADEMY OF CHESS

ROOK NO FURTHER 128!

[illegible]

THE
WHAT?

Rook no further! Find me on sydneyacademyofchess.com.au/newsletters + on our [Facebook Page](#)

COACH JOKES The chess player once brought a friend to watch him play a tournament
He won that competition. Should have guest 😊

TACTICAL TIPS + TRICKS: "Simple Strategies from the get go 3" Steering the Game Straight to an Ending

See Magic Mini

Hi guys. This is more of a general game plan, and it depends very much on who you are playing, but even for me, I find a lot of players just aren't super comfortable going immediately into an endgame. That is bypassing the middlegame altogether, straight out of the opening. Players are more used to attacking in the middlegame, trying to get to a castled King, rather than swapping Queens off on move 5 and carefully bringing your King out into the center after that. I'm talking about openings like the Black Lions yawn. That happens, for example after the moves: **1. e4 d6 2. d4 Nf6 3. Nc3 e5 4. dxe5 dxe5 5. Qxd8+ Kxd8**. Now, as long as Black can bring out all of their pieces, Bishop to e6, other knight to d7, pawn c6, King c7 and Bishop c5 just generally (depending

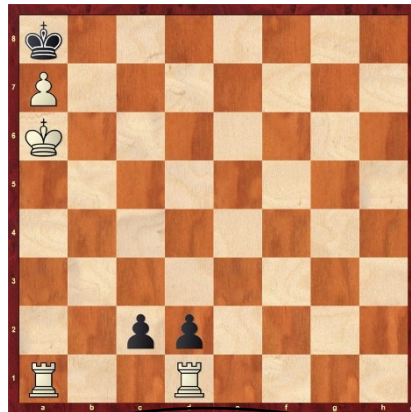
upon opponent's threats of course), it actually

PESKY PUZZLES:

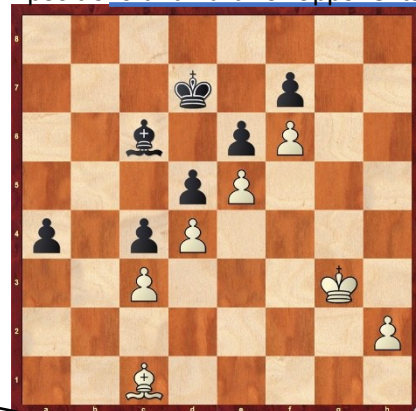
How can Black cleverly win a White Rook here? *Hint: Take advantage of White's King being stuck on the back rank :)*



Find the best move/moves.



can be super easy to play such positions and hard for opponents.



MAGIC MINI

1. e4 d6
2. d4 Nf6
3. Nc3 g6
4. f3 c6
5. Be3 b5
6. Qd2 Nbd7
7. g4 Nb6
8. g5 Nh5
9. b3 e5
10. 0-0-0 Nd7
11. d5 b4
12. dxc6 bxc3
13. Qxc3 Nb6
14. c7 Qd7
15. a4 Nxa4
16. bxa4 a6
17. Bh3 Qxa4
18. Qxe5+ dxe5



In the **final position** above, White nicely “upset the apple cart” (code in old chess books for a Queen sacrifice) to get checkmate :) :) :) :) :) :)

19 Rd8+ Ke7

Fercec-Medak
2000

2) Find the checkmate in 2 for **White** in the above position.

UPCOMING EVENTS

<https://sydneyacademyofchess.com.au/tournaments/upcoming>

PARRAMATTA U/500 JCL CHESS TOURNAMENT 7TH JUNE

12:45pm- 3:50pm

Online Code: 1IX545TQU0

ROSEVILLE SATURDAY FUN TOURNAMENT 7TH JUNE

1:40pm- 4:50pm

Online Code: 3CZSBPIYXF

BURWOOD U/12 CHESS TOURNAMENT 8TH JUNE

9:00am- 11:50am

Online Code: ETPY8ZT1GA

BURWOOD U/400 CHESS TOURNAMENT 8TH JUNE

1:00pm- 3:50pm

Online Code: 9EN3XBKFBD

PARRAMATTA SATURDAY FUN TOURNAMENT 14TH JUNE

12:50pm- 3:50pm

Online Code: WNI41D9KRC

To enrol in any of the above please pay online with your credit card or debit card at www.sydneycademyofchess.com.au/payment enter the relevant code, and fill in the electronic form, with your child's details.

BONUS CHESS JOKE

What's lighter than a blue coloured chess set? Well, a light blue coloured chess set 😊😊😊😊😊😊

SuperCoach signing off