

Announcement: Yes, continuing the **ROOK NO FURTHER SPECIAL EDITION THEMES**, it's RNF 122 'Stonewall'. Remember too, the big rock was really good at chess because its attacks were **boulder** 😊 And one should never take a stonewalls chess moves for granite. 😊



2025 RNF 122

ROOK NO STONEWALL



What did the rock say when it won the chess tournament outright? "It really magma day"

THE WHAT

So, kids, do you want to test your chess skills in a NEW, FUN and EXCITING WAY? And Parents, do you want to know more about upcoming junior tournaments? Rook no further! Find me on sydneyacademyofchess.com.au/newsletters + on our [Facebook Page](#)

COACH JOKES

Q: Why couldn't the volcanic rock think of a good chess move?
A: Too much pressure! 😊

TACTICAL TIPS + TRICKS:

"Interesting Ideas 2"
The Stonewall- see magic mini

Before starting its game, the pebble said "Let's rock" :)

Move order of setup is not set in Stone 😊

Hi guys. For this 2nd Rook No Further special edition, let's look at the Stonewall setup. For White it's called the 'Stonewall Attack', for Black as more or less a mirror image, it's called the "Stonewall Defence". Now both are categorised by moving your D pawn up two squares, your E pawn up one square, you bring your King Bishop out 2 squares up from your Queen, your move your F pawn up two squares, than your King knight comes out and you castle. From here, C pawn up one square, then typical plans are to move your King knight to e5 for White (e4 for Black), bring your Queen out to f3 than to h3 (for White, f6 to h6 for Black), and you need to find the right time to develop your Queenside too. A knight on d2 (for White, d7 for Black) supports an E pawn push

PESKY PUZZLES:

In each position find the best move/moves. The Stonewall does give flexible prospects of a strong Kingside attack :) :)

Missing Mate in One
Perhaps showing that everyone can make a mistake, it's not often that a Grandmaster misses checkmate in 1 even in a time scramble on a clock. Can you spot the checkmate for **White** here? 😊 😊 😊



MAGIC MINI

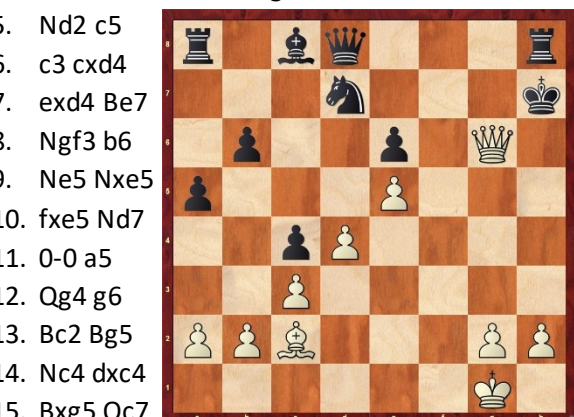
"Solidify the Queenside then go after the King"

WHITE mates in 1 here, but it's not easy! Hint: What's not fully pinned? 😊

Hint: Break down Question

Stonewall Mini- Kujoth-Crittenden 1949

- d4 d5
- e3 Nf6
- Bd3 e6
- f4 Nbd7
- Nd2 c5
- c3 cxd4
- exd4 Be7
- Ngf3 b6
- Ne5 Nxe5
- fxe5 Nd7
- 0-0 a5
- Qg4 g6
- Bc2 Bg5
- Nc4 dxc4
- Bxg5 Qc7
- Rxf7! Kxf7
- Rf1+ Kg7
- Bh6+ Kxh6
- Rf7 Qd8
- Rxh7+ Kxh7
- Qxg6# 1-0

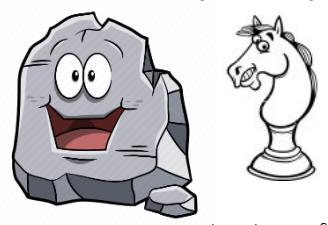


Playing chess v. a front gate helps as you're learning defence

UPCOMING EVENTS

- <https://sydneyacademyofchess.com.au/tournaments/upcoming>
PARRAMATTA SATURDAY FUN TOURNAMENT 8TH MARCH 12:50pm- 3:50pm
Online Code: WNI41D9KRC
- HORNSBY SUNDAY FUN TOURNAMENT 9TH MARCH** 10:10am- 1:20pm
Online Code: YRHRMZUBD
- CHESS SQUAD SATURDAY U/18 TOURNAMENT 15TH MARCH** 9:30am- 12:30pm
https://www.chesssquad.com/subscribe/?plan=prod_RQpTJIQ4Z3oXy/
- PARRAMATTA U/12 CHESS TOURNAMENT 15TH MARCH** 12:45pm- 3:50pm
Online Code: 9Z01CMLJKR
- PYMBLE SATURDAY FUN TOURNAMENT 22ND MARCH** 12:40pm- 3:50pm
Online Code: ND0834EBE0

To enrol in any of the above please pay online with your credit card or debit card at www.sydneyacademyofchess.com.au/payment enter the relevant code, and fill in the electronic form, with your child's details.



SuperCoach signing off