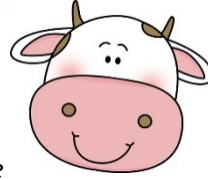


Announcement: What's going on? No Rook NO Further? Yes, still Rook No Further, but **Rook No Further 121** is on the 'Cow Opening'. So this **Special Edition** is Rook No Moooove!
 ☺ And just remember too, the cow was too busy to play chess as he went to the mooovies ☺



2025 RNF 121

ROOK NO MOOOOVE!

What was the baby cow told when he wanted to play chess at night? No, it's pasture bedtime

THE WHAT

So, kids, do you want to test your chess skills in a NEW, FUN and EXCITING WAY?
 And Parents, do you want to know more about upcoming junior tournaments?
 Rook no further! Find me on sydneyacademyofchess.com.au/newsletters + on our [Facebook Page](#)

COACH JOKES

Q: If one cow simply waits for another to make a mistake in a chess game, is that called a steak out? ☺

TACTICAL TIPS + TRICKS:

"Interesting Ideas 1"

You know how cows laugh? Moo-hahaha :) :) :)

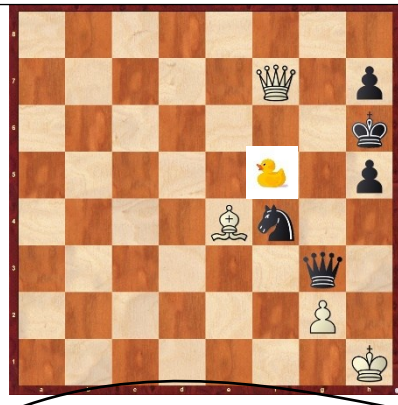
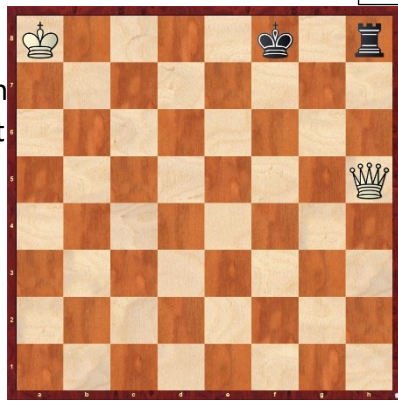
The Cow Opening- see magic mini

Up to you, if you like this try it :)

Hi everyone and welcome back/happy new year ☺ For this first ever special edition of RNF (indeed Rook No Moooove), I thought we'd cover the highly interesting 'Cow Opening' and how we should approach all such similar ideas like this as the chess players that we are. Now, the Cow opening is a 'System' opening- meaning you can play it for White and for Black. It was popularised recently by the Spanish Swedish Woman Fide Master Anna Cramling. The Cow Opening is the idea that you (in no particular order) start the game by pushing your E and D pawns up one square, then you bring your knights out to b3 and g3 (b6 and g6 for Black) via d2 and e2 (d7 and e7 for Black), bring your bishops out next and then castle. Then you decide upon how to

DESKY PUZZLES:

Fun Variant Chess
 In this newsletter let's look at some puzzles with chess pieces but different chess rules. For example, here **White mates in one** but its 'Checkless Chess'. So checks aren't allowed.
Hint: Where can't Black take your Queen because of check?



In each position find the best move/moves. **Q2: "Take the King". U can't take the duck** fully, or halfway is just a way to get a unique position

MAGIC MINI

- GM Platon Galperin (SWDN) v. WFM Anna Cramling- A Grandmaster wins with the Cow**
- | | | |
|---------------------------|---------------|---------------|
| 1. e3 d5 | 18. Kh1 Nxf2+ | 26. Bxf5+ Kb8 |
| 2. d3 e5 | 19. Rxf2 Qh3+ | 27. Rg1 h2 |
| 3. Ne2 Nf6 | 20. Kg1 Qg3+ | 28. Rh1 Rh4 |
| 4. Nd2 c6 | 21. Rg2 Qe3+ | 29. N2f3 Rh6 |
| 5. Ng3 h5 | 22. Kh1 Qh3+ | 30. Qe1 Qf4 |
| 6. Be2 (OR h4 to stop) h4 | 23. Kg1 Qe3+ | |
| 7. Ngf1 Bd6 | 24. Kf1 h3 | 31. Bc1 Qg3 |
| 8. h3 Be6 | 25. Bg4+ f5 | 32. Qxg3 Bxg3 |



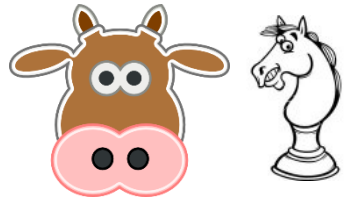
@ 32 With Bxh6. White won easily

WHITE has a Duck Chess mate in 2
 Duck chess- You move a piece plus always move the duck to any free square (the duck is a blocker). **Rook? Hint: Remove Guard**

UPCOMING EVENTS

- <https://sydneyacademyofchess.com.au/tournaments/upcoming>
- | | |
|---|------------------------|
| PYMBLE SATURDAY FUN TOURNAMENT 22ND FEBRUARY | 12:40pm- 3:50pm |
| Online Code: ND0834EBE0 | |
| PARRAMATTA U/500 JCL TOURNAMENT 1ST MARCH | 12:45pm- 3:50pm |
| Online Code: 1X545TQU0 | |
| ROSEVILLE SATURDAY FUN TOURNAMENT 1ST MARCH | 1:40pm- 4:50pm |
| Online Code: 3CZSBPIYXF | |
| EPPING SATURDAY FUN TOURNAMENT 1ST MARCH | 1:40pm- 4:50pm |
| Online Code: V06ITW5RAY | |
| BURWOOD SUNDAY FUN TOURNAMENT 2ND MARCH | 9:20am- 1:00pm |
| Online Code: TX7STZUM8L | |

To enrol in any of the above please pay online with your credit card or debit card at www.sydneyacademyofchess.com.au/payment enter the relevant code, and fill in the electronic form, with your child's details.



SuperCoach signing off