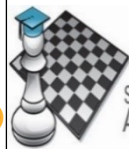


Announcement: Why did the strawberry really want to resign its chess game? Because its pieces were in a jam XD And, why did the Alien think its chess moves were so good? Because they were out of this world 😊 RNF bringing even more Term 4 classics in 2024 😊



SYDNEY ACADEMY OF CHESS

2024

ROOK NO FURTHER # 116

Why do Pandas like to play chess with Zebras? Because games are easier when everything is Black and White 😊

THE WHAT

So, kids, do you want to test your chess skills in a NEW, FUN and EXCITING WAY?

And Parents, do you want to know more about upcoming junior tournaments?

Rook no further! Find me on sydneyacademyofchess.com.au/newsletters + on our [Facebook Page](#)



COACH JOKES Q: Why didn't the apple want to play on in its drawn chess position?
A: It thought it would be fruitless 😊

TACTICAL TIPS + TRICKS:

NB: SEE RNF 27 for the 'normal tennison gambit'

UPDATED EDN

**"Rarest of the Rare"
'Turbo Tennison Gambit'**

See Magic Mini 4 a game with Carlsen!

Hi everyone. This term I thought we'd look at some ultra rare ideas in the chess world and how we can use such to help us in our own study 😊 The first of these ideas is what I call the "Turbo Tennison Gambit". This is an idea for White to give up a pawn after the moves: '1. Knight f3 pawn d5 2. pawn b3 pawn c5 and 3. now pawn e4!'. Immediately, White is just giving up this pawn after Black goes 3. dxe4. So the question is why does White want to give up a pawn like this? One answer, according to Magnus Carlsen (the highest rated player in history), in one of his games against former World Champion Vishwanathan Anand, was to put his knight on g5, bring his other knight to c3 (double attacking e5), his light squared Bishop to c4 and dark squared bishop to b2 with

a very big Kingside attack vs. normal play. You can also go

PESKY PUZZLES:

In each position find the best move/moves.

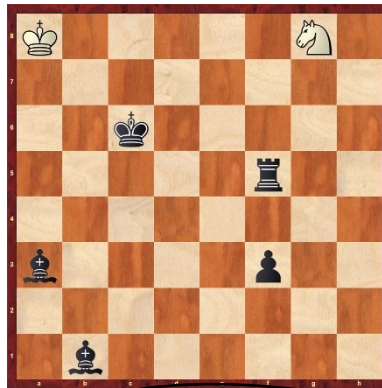
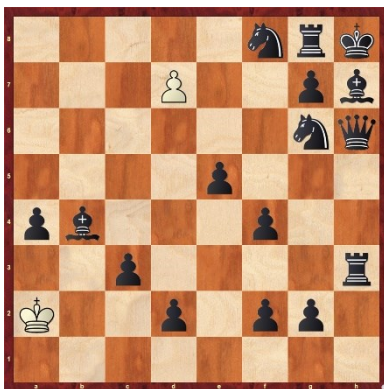
White to move = W Black to move = B knight e5 (instead of g5) with tricks. 2 get your pawn back

Interesting Study 1 :

QUESTION

One piece to win the game is all that's required here for

White 😊 White moves first, find the checkmate 😊



How many knight moves does it take to check the King safely #maze

White smothered mates in 10

MAGIC MINI

'Turbo Tennison' Ne5 Trap and General Idea

Classic Trap

- Nf3 d5
- b3 c5
- e4 dxe4
- Ne5 Qd4?
- Bb2! Qxb2?
- Nc3! Qa3
- Bb5+ Bd7
- Nc4!! Qb4 (and 9. a3!! White traps Queen)

General Idea- If Black doesn't fall for this, White just develops and piles up on Black's e4 with both Knights and Queen or Rook after castling...

Carlsen-Anand 2014

- | | | | |
|------------|--------------|--------------|--------------------|
| 1. Nf3 d5 | 6. Bc4 e6 | 11. f4! ppx | 16. g4 Be6 |
| 2. b3 c5 | 7. Bb2 Be7 | 12. Qh5 Nd4 | 17. BxB pxB |
| 3. e4 ppx | 8. 0-0 0-0 | 13. Rxf4 g6 | 18. RxR BxR |
| 4. Ng5 Nf6 | 9. Ncxe4 NxN | 14. Qe5! b6 | 19. Nf6 Kh8 |
| 5. Nc3 Nc6 | 10. NxN e5 | 15. Raf1 Bf5 | 1-0 Ne8 now |

UPCOMING EVENTS

<https://sydneyacademyofchess.com.au/payment>

To enter any of the following Use the code and enter details

- | | |
|--|------------------------|
| BURWOOD U/8 CHESS TOURNAMENT 26TH OCTOBER | 9:00am- 12:00pm |
| Online Code: 5C83KPLA3L | |
| BURWOOD U/12 CHESS TOURNAMENT #2 26TH OCTOBER | 9:00am- 12:00pm |
| Online Code: PVLRF6RZO3 | |
| BURWOOD U/800 JCL TOURNAMENT #2 26TH OCTOBER | 1:00pm- 4:00pm |
| Online Code: CSYJX3V49F | |
| BURWOOD U/400 JCL TOURNAMENT 26TH OCTOBER | 1:00pm- 4:00pm |
| Online Code: WKX8HOQHSY | |
| EPPING SATURDAY FUN | |
| 1:40-4:50pm Code: N8E2TL4ZR9 | |



Position after move 7 with full development



28TH OCTOBER



SuperCoach signing off