

Announcement: What do you call it when a mushroom isn't too sure where to move in its chess game but it has a go anyway? A fun guess 😊 Hi guys, in this RNF let's continue looking at some different opening plans - this time the London System :) :)



ROOK NO FURTHER # 70

THE WHAT

So, kids, do you want to test your chess skills in a NEW, FUN and EXCITING WAY? And Parents, do you want to know more about upcoming junior tournaments? Rook no further! Find me on sydneyacademyofchess.com.au/newsletters + on our [Facebook Page](#)

COACH JOKES: Q: Did the T-Rex view that amazing chess game?
A: Yes, the dinosaur 😊

TACTICAL TIPS + TRICKS:

Opening Setups: "THE LONDON" - For

White: **See Magic Mini**

Hi everyone, let's look at the London System. It's an opening setup for white that happens after the moves 1. pawn to d4, a black pawn to d5 and 2. Bishop to f4. This is already the London. The plan is to develop simply, attacking either on the Queenside, in the center, or on the kingside depending upon how Black wants to play it. For example, after Pawn to d4, pawn d5 and 2. Bishop to f4, Black can try knight to f6. White should generally always play pawn to e3, if Black goes pawn e6, now knight to f3 and Black can try bishop to d6 challenging our "London" bishop directly. The best move for white now, is Bishop back to g3 so if Black trades bishops we play h pawn takes and open up the h file for our rook. If Black castles instead, white has other Bishop to d3, pawn c3, Nbd2 and castles + moves like Ne5 and f4 coming. It's quite flexible. See the magic mini for another way to play it vs. an early Black Queen b6.

PESKY PUZZLES:

In each position find the best move/moves.

White to move = W Black to move = B

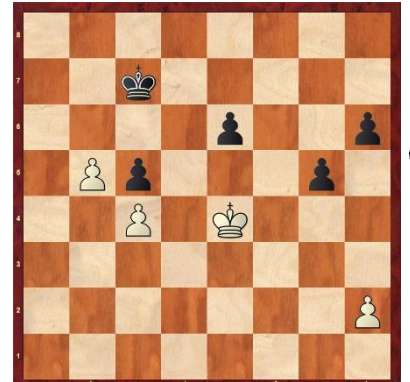
Here, we are white, from the game Super GM Karjakin v. Super GM Mamedyarov Find the checkmate in 2- by following the checks 😊 😊



W



W

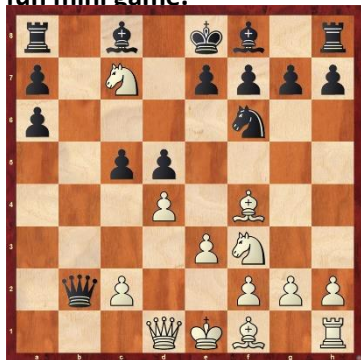


MAGIC MINIS

UPCOMING EVENTS

Each newsletter, a fun mini game.

- d4 d5
- Bf4 c5
- e3 Nf6
- Nf3 Qb6
- Nc3! Qxb2
- Nb5 Na6
- Rb1 Qxa2
- Ra1 Qb2
- Rxa6 bxa6



Bonus Chess Jokes

10. Nc7+ 1-0
Here, white wins a piece with the fork. How did the full stop encourage his friend in the chess game?
Comma you can do it 😊
5. Nc3 answers Qb6, even if Black doesn't take b2, Rb1 next for white is good. Wooden you know it the wooden chess clock wooden work 😊 😊

<https://sydneyacademyofchess.com.au/tournaments/upcoming>

CHESS SQUAD (ONLINE) U18 TOURNAMENT 2ND JULY 9:30am- 12:30pm

https://www.chesssquad.com/subscribe/?plan=prod_L1PAyY5mC4GSjA

MOSMAN SATURDAY FUN TOURNAMENT 2ND JULY 1:30pm- 4:25pm

Online Code: WCRTYZXN24

INNER WEST SUNDAY FUN TOURNAMENT 3RD JULY 9:20am- 1:00pm

Online Code: EKJNVWLQPS

BURWOOD CHESS CHALLENGE 5TH JULY 8:45am- 3:15pm

Online Code: QB7L3XY9XY

EPPING CHESS CHALLENGE (WINTER) 12TH JULY 9:15am- 2:30pm

Online Code: 1BRW9L14IY

To enrol in any of the above please pay online with your credit card or debit card at

www.sydneyacademyofchess.com.au/payment

enter the relevant code, and fill in the electronic form, with your child's details.



SuperCoach signing off