

Announcement: Where do Dinosaurs try to get their pawns to in chess? The tricera top of the board. Dolphins try to get their pawns to the dolphinish line 😊 Hi everyone, let's look at a fun structural opening for Black 😊 😊 😊



ROOK NO FURTHER # 69

THE WHAT

So, kids, do you want to test your chess skills in a NEW, FUN and EXCITING WAY? And Parents, do you want to know more about upcoming junior tournaments? Rook no further! Find me on sydneyacademyofchess.com.au/newsletters + on our [Facebook Page](#)

COACH JOKES: Q: Why are chickens so good at chess?
A: Because they think outside the bawks 😊

TACTICAL TIPS + TRICKS: Structure openings: "Nimzowitsch + Mikenas Defence" For Black -See Magic Mini

Hi guys. An interesting defence for black, is 1. Knight to c6 as an answer to pawn to e4 or pawn to d4 at the start. If white plays pawn to e4, knight to c6 is called the **Nimzowitsch defence**. If white starts pawn to d4, knight to c6 is called the **Mikenas defence**. Using Knight c6 vs. both e4 & d4 is called the **"Dark Knight System"**. In the Nimzowitsch (against e4), after black goes knight c6, white usually follows up with 2. Pawn to d4. And now we go 2. Pawn e5 and we let white overpush with pawn to d5 (to attack our knight). However, Black gets a really great game here, with Knight c to e7 then Knight to g6, the other knight to f6, Bishop to c5, pawn d6 + castling + bringing our other bishop out. In the Mikenas its similar. d4, Knight c6 invites white to push d5, but after knight e5 (if they go pawn f4, knight back to g6) and black can strike back in the centre with pawn e6, knight f6 + Bishop c5 😊 😊

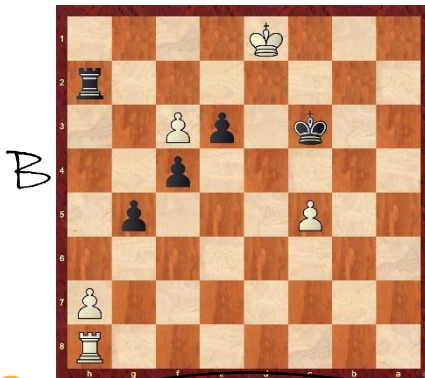
PESKY PUZZLES:

In each position find the best move/moves.
White to move = W Black to move = B

Question:
Here we are White-
from my own
online game vs. an
International Master.
Our rook's trapped, but
how can we win
black's rook back? 😊



Hint: Open a1 to h8 diagonal 😊



MAGIC MINIS

Each newsletter, a fun mini game.

1. d4 Nc6
2. d5 Ne5
3. e4 e6
4. f4 exd5!
5. fx e5 Qh4+
6. Ke2 Qh5+
7. Kd2 Qh6+
8. Kc3 Qc6+
9. Kd2 Qh6+
10. Kc3 Qc6+
11. Kd2 Qh6+ = Draw



Bonus Chess Joke

Why is 12:59 the best time to play? Chess is a 1 to 1 match 😊

Here, it's a draw by triple repetition. But, if white goes 11. Kb3, then Qb6+ Kc3, Qb4+, Kd3, Qb5+ Ke1 & Qxe5, Black is better.

UPCOMING EVENTS

<https://sydneyacademyofchess.com.au/tournaments/upcoming>

- | | |
|---|------------------------|
| PYMBLE SATURDAY FUN TOURNAMENT 18TH JUNE | 12:40pm- 3:50pm |
| Online Code: OJ3TRKEPPQ | |
| HORNSBY SUNDAY FUN TOURNAMENT 19TH JUNE | 12:40pm- 3:50pm |
| Online Code: 73NU2BIEZ3 | |
| EASTERN SUBURBS SUNDAY FUN TOURNAMENT 19TH JUNE | 12:40pm- 3:50pm |
| Online Code: 7GLNOX854Q | |
| CHESS SQUAD (ONLINE) U18 TOURNAMENT 19TH JUNE | 9:30am- 12:30pm |
| https://www.chesssquad.com/subscribe/?plan=prod_L1LHBo7h3YDnMW | |
| EPPING SATURDAY FUN TOURNAMENT 25TH JUNE | 1:40pm- 4:50pm |
| Online Code: WOGVDY21IT | |

To enrol in any of the above please pay online with your credit card or debit card at www.sydneyacademyofchess.com.au/payment enter the relevant code, and fill in the electronic form, with your child's details.



SuperCoach signing off