

Announcement: Why do plain pizzas always win chess tournaments? Because they're not topped :) Hi everyone, in this RNF I thought it would be useful to include some tips and tricks on the Larsen attack chess opening for white. It's a rare and surprising opening :)



ROOK NO FURTHER # 64

THE WHAT

So, kids, do you want to test your chess skills in a NEW, FUN and EXCITING WAY?

And Parents, do you want to know more about upcoming junior tournaments?

Rook no further! Find me on sydneyacademyofchess.com.au/newsletters + on our [Facebook Page](#)

COACH JOKES: Q: What do you call a T-Rex who isn't sure where to move in chess?
A: A dunnosaur 😊

TACTICAL TIPS + TRICKS: Surprising openings: "LARSEN ATTACK" - opening for white; See Example in Magic Mini

Hi everyone, let's look at the Larsen attack. It starts with 1. pawn to b3 and 2. Bishop to b2. White wants to develop while improving the space this bishop has along the a1 to h8 diagonal. If (after our 1. pawn to b3), Black goes 1. Pawn to d5, Black is planning to develop around our bishop. So, white can continue 2. Bishop to b2 and afterward Black usually plays 2. Pawn to c5. Now, white can go pawn to e3 and pawn f4 (at some point) to strengthen our bishop's dark squared control. While, further developing moves, like knight to f3 and Bishop to b5, (especially when Black goes knight to c6- we want to take this knight that can pressurize d4 + e5), remain good. If Black goes 1. Pawn to e5, they're planning to block our dark squared bishop directly. But, we can immediately start targeting e5 after Bishop to b2 anyway, moving pawn e3, knight f3 + pawn d4, attacking in the center 😊😊

PESKY PUZZLES:

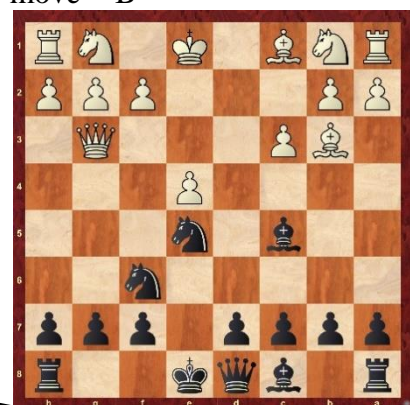
Question:

Here we are Black. We've got 2 strong "connected passed pawns". How can we promote? Hint; Far advanced connected passed pawns can beat a rook 😊



In each position find the best move/moves.

White to move = W Black to move = B



MAGIC MINIS

Each newsletter, a fun mini game.

1. b3 d5
2. Bb2 c5
3. e3 Nc6
4. Bb5 Bd7
5. Bxc6 Bxc6
6. f4 b6
7. Nf3 e6
8. Ne5 Bb7
9. Qe2 a6
10. O-O Nf6
11. f5 exf5
12. Rxf5 Bd
13. Ng4 O-O
14. Nxf6 gxf6
15. Bxf6 Qd7
16. Qg4 checkmate 😊



Bonus Chess Joke

Whose the toughest bird chess player? Steven Seagull 😊

Larsen typical game play, improving space of b2 Bishop 😊

UPCOMING EVENTS

<https://sydneyacademyofchess.com.au/tournaments/upcoming>

- | | |
|--|------------------------|
| PARRAMATTA SATURDAY FUN TOURNAMENT 12TH MARCH | 12:50pm- 4:00pm |
| Online Code: 51XQ3P2758 | |
| HORNSBY SUNDAY FUN TOURNAMENT 13TH MARCH | 12:40pm- 3:50pm |
| Online Code: 73NU2BIEZ3 | |
| PYMBLE SATURDAY FUN TOURNAMENT 19TH MARCH | 12:40pm- 3:50pm |
| Online Code: OJ3TRKEPPQ | |
| NORTHERN BEACHES SUNDAY FUN TOURNAMENT 20TH MARCH | 12:40pm- 3:50pm |
| Online Code: U8EYMM62KX | |
| EPPING SATURDAY FUN TOURNAMENT 26TH MARCH | 1:40pm- 4:50pm |
| Online Code: WOGVDY21IT | |

To enrol in any of the above please pay online with your credit card or debit card at www.sydneyacademyofchess.com.au/payment enter the relevant code, and fill in the electronic form, with your child's details.



SuperCoach signing off