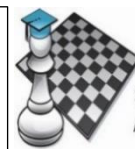


Announcement: Why did the umbrella stop its chess game after its' King was attacked? It took a rain check :) Hi guys, so as to get more of a picture of the unique Lion opening structure, let's look at some White lion ideas for white. Have fun 😊 RNF



SYDNEY ACADEMY OF CHESS

ROOK NO FURTHER # 71

THE WHAT

So, kids, do you want to test your chess skills in a NEW, FUN and EXCITING WAY? And Parents, do you want to know more about upcoming junior tournaments? Rook no further! Find me on sydneyacademyofchess.com.au/newsletters + on our [Facebook Page](#)

COACH JOKES: Q: Why couldn't Elsa win her online chess game?
A: Because it was Frozen 😊

TACTICAL TIPS + TRICKS: Structure openings: "THE LION" - For White-The White Lion; See Magic Mini

Hi guys, in this RNF let's have a look at the White lion. It's for White. It can be played in the exact same way as the black lion setup (see RNF 41). The base of the White Lion is: White pawns at e4, d3 and c3, Knights out to f3 and your Queen knight to d2, Bishop to e2, castling and Queen to c2. The Queen bishop on c1 can always be brought out by moving your d2 knight to c4, or to f1 and then maybe to g3 etc.. The difference with the White lion (compared to the Black Lion), is that there's some other really useful setups as well. Like against the Sicilian. That is, where Black answers your 1. Pawn to e4 with 1. Pawn to c5. Here, the best way for White to play now is (with the pawn on e4), also put pawns on f4, d3 and c3 and develop around this scheme. Black can sometimes opt for a Queen trade (called the White lions yawn), after pawn e4, pawn c5 pawn f4 pawn d5 and pawn d3. But this is very safe 😊

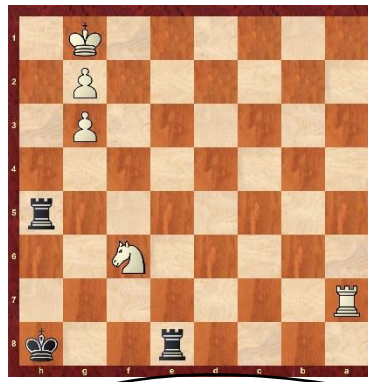
PESKY PUZZLES:

In each position find the best move/moves.
White to move = W Black to move = B

Question:
Here we are White.
Check and see if
White's King can
move. If it can't, can
we lose our Queen to
Stalemate? 😊 How?



B



W



MAGIC MINIS

Each newsletter, a fun mini game.

1. e4 c5
2. f4 d5
3. d3 dxe4
4. dxe4 Qxd1+
5. Kxd1 Nf6
6. Nc3 Nc6
7. Nf3 Bg4
8. Be3 0-0-0+
9. Kc1 e6
10. Nd2 e5
11. f5 g6
12. h3! 1-0



Bonus Chess Joke

How was the omelette's chess game? Eggs-stroardinary 😊 😊

Here, this lion opening trap I once used to win a trap I once used to win a fide vs. a Fide Master

Playing lots of different openings a lot is the best way to practice them 😊

UPCOMING EVENTS

<https://sydneyacademyofchess.com.au/tournaments/upcoming>

- | | |
|---|------------------------|
| EPPING SATURDAY FUN TOURNAMENT 30TH JULY | 1:40pm- 4:50pm |
| Online Code: WOGVDY21IT | |
| CHESS SQUAD (ONLINE) U18 TOURNAMENT 6TH AUGUST | 9:30am-12:30pm |
| https://www.chesssquad.com/subscribe/?plan=prod_L1PARzyjgMGyf | |
| MOSMAN SATURDAY FUN TOURNAMENT 6TH AUGUST | 1:30pm- 4:25pm |
| Online Code: WCRTYZXN24 | |
| INNER WEST SUNDAY FUN TOURNAMENT 7TH AUGUST | 9:20am- 1:00pm |
| Online Code: EKJNVWLQPS | |
| PARRAMATTA SATURDAY FUN TOURNAMENT 13TH AUG | 12:50pm- 4:00pm |
| Online Code: 51XQ3P2758 | |

To enrol in any of the above please pay online with your credit card or debit card at www.sydneyacademyofchess.com.au/payment enter the relevant code, and fill in the electronic form, with your child's details.



SuperCoach signing off